



Grand Cru Series • Harmony Series • Stone Series

Pre-installation Instruction 2

Installation Instruction 7

Care and Maintenance 9

Product Warranty 10



170-6333 Graybar Rd
Richmond BC, Canada



Tel: 604 276 0833
Fax: 604 276 0633
Toll Free: 1 888 540 0833



info@unifloor.ca
www.unifloor.ca
www.ecpremiumflooring.com

Responsibility of Homeowners and Installers:

- It is a high recommendation to all installers to read through installation instructions before proceeding installation.
- A visual inspection of different boards by opening several boxes of the product with homeowner or project management is highly recommended before commencing installation.
- Do not proceed with the installation if the product is not satisfying with color or quality. Once the product has been installed, it is considered products are deemed to be accepted by customers. It is the installers' responsibility to communicate with the homeowner during this entire inspection process.
- All EC Premium - AquaFix products are manufactured to meet practical industry standards with a maximum of 5% of defects as milling tolerance. Throughout the entire installation, any pieces of flooring that appear to contain a manufacturing defect should not be installed.
- It is the responsibility of the installer and homeowner to ensure all job site condition requirements are reached before commencing installation. Manufacture takes no responsibility for defects causing by improper job site preparation and installation procedures.

Do not install any defect or unsatisfactory planks.

EC Premium - AquaFix accepts no responsibility for any cost related to the installation of an unsatisfactory product.

Part 1 Pre-installation

A: INSTALLATION TOOLS



Saw



Hammer



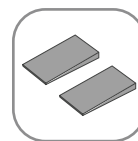
Mallet



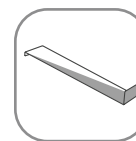
Table Saw



Glue



Spacer



Pull Bar



Grinder



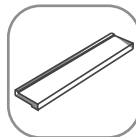
Broom



Cutter



Measure
Tape



Tapping
Block



Sliding
T-bevel
Gauge



Square
Gauge Ruler



Moisture
Meter



Leveler



170-6333 Graybar Rd
Richmond BC, Canada

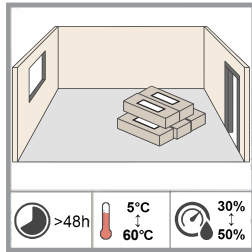


Tel: 604 276 0833
Fax: 604 276 0633
Toll Free: 1 888 540 0833



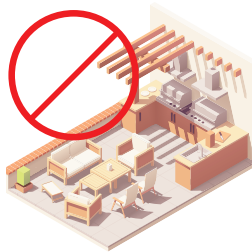
info@unifloor.ca
www.unifloor.ca

B: STORAGE



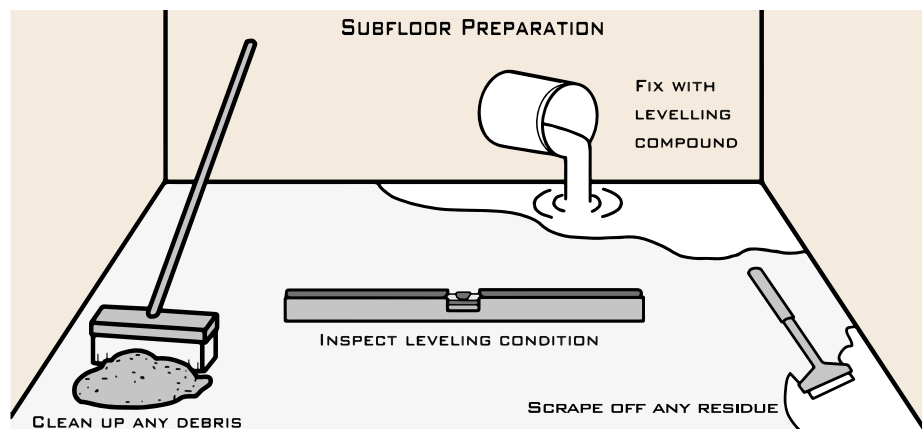
- **Delivery**
 - Please do not deliver flooring to the job site if the job site's climate conditions have not met, as described in section E.
 - During transportation, all packages must be well protected from the weather.
- **Storage before installation**
 - The panels should be stored unopened in the middle of the room at a room temperature of 5°C (41°F)-60°C (140°F) and relative humidity of 30%-50% for min. 48 hours.
 - Never store boxes on their sides.

C: APPLICATION



- EC Premium - AquaFix is intended for **indoor use** as flooring cover only.
- Only floating installation method is allowed for SPC flooring. No adhesive should be used.

D: SUBFLOOR CONDITIONS



- **Evenness**

The subfloor must be fixed to an even condition as follow:

 - Maximum +/- 0.1" per 6.6' (2.5mm per 2m) radius span.
 - Maximum +/- 3/16" per 10' (4.7mm per 3m) radius span.
 - Sand down any irregularities, fill any uneven spot with NWFA approved leveling compound.
 - No crack or deflection is allowed.
- **Existing subfloors**

Do not install SPC flooring over any type of existing flooring and carpet.

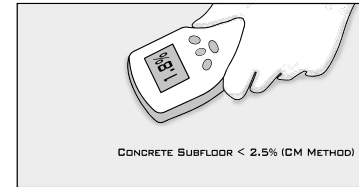


- **Cleanness**

The subfloor has to be clean before installing the SPC flooring and free of any debris or any microorganisms.

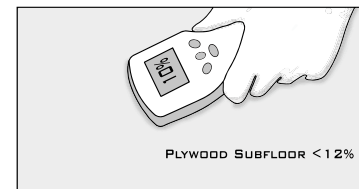
- **Installation on concrete**

- The concrete subfloor must be tested for moisture content using the CM (Calcium Carbide Method) test method and must return a reading of no more than 2.5% as moisture content of the substrate.
- Must be completely dry for at least 60 days before commencing installation.

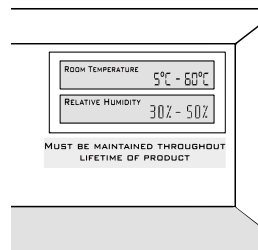


- **Installation on wood subfloors**

- Plywood subfloor moisture content must not exceed 12%, and the variance in moisture content between the subfloor and the flooring panels must not exceed 3.5%.
- All squeaking noise coming from the substrate should be fixed before the installation of new flooring.



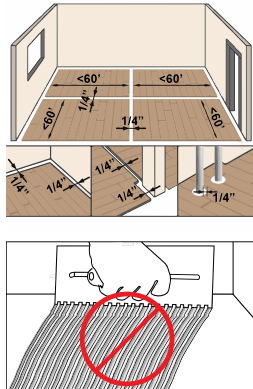
E: TEMPERATURE AND MOISTURE CONDITIONS



- It is also important that the flooring material is in the same temperature range as the installation site. Do not deliver flooring to job sites if climate conditions have not been met, as described below.
- Allow the flooring to acclimate at the climate-controlled job site for a minimum of **48 hours** when the desired climate range has met.
- The room temperature should be **5°C (41°F) - 60°C (140°F)**. With relative humidity between **30%-50%**. These environmental conditions must be maintained for the life of the product. (before, during, and after the installation)
- SPC flooring itself is compliant to a temperature range from -60°C (-76°F) to 60°C (140°F), once it's installed. However, when the temperature drops below freezing, room temperature must be adjusted to above 5°C (41°F) for a minimum of 72 hours before walk on it.

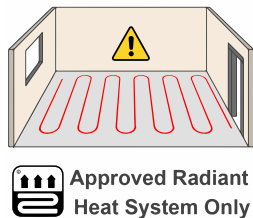


F: SPACE FOR EXPANSION & MAXIMUM SIZE WITHOUT EXPANSION GAP



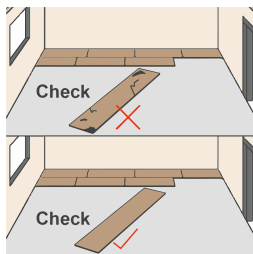
- During installation, leaving a 1/4" (6mm) expansion space around the entire perimeter of the floor between the flooring and the walls, and all vertical/fixed objects (e.g., door structures, fireplace). Undercutting vertical structures might be an option by ensuring no damage to the structural function of the objects.
- **No fixing with the subfloor**
 - The flooring is laid without using any adhesives or other means of attachment - the tongue and groove are mechanically locked together.
 - Under no circumstances must the panels be glued, nailed, or otherwise fixed to the subfloor.
- **Do not exceed 60 linear ft radius span** without an expansion gap and transition molding.

G: INSTALLATION OVER A RADIANT HEAT SYSTEM



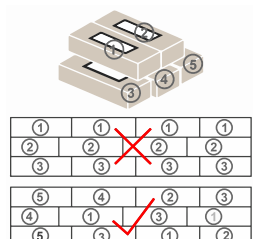
- EC Premium - AquaFix SPC Flooring can be installed over the hydronic and electric radiant heat system. Both hydronic pipes and heating wires must be embedded and isolated with a minimum of 3/8" (9.5mm) thick concrete or plywood.
- Ensure that the system is in full working order and has been fully tested and running for a minimum of two weeks before installation. The system should be turned off for 24 hours prior to installation in the install zone.
- It is strongly recommended to attach heat sensors onto the subfloor every 200sf of areas.
- During installation, the temperature should maintain above 5°C(41°F). **Never allowed the surface temperature of flooring go above 60°C (140°F)**
- Always adjust the temperature control at 4°C to 6°C gradually increments. Any dramatic temperature will cause damage to flooring.
- Do not use electric wire type area rugs due to dramatic fluctuations of temperature that will cause damage to SPC flooring.

H: PRODUCTS INSPECTION



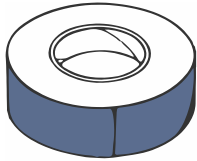
When racking, inspect all boards for visible manufacturing defects. The dealer may replace boards with manufacturing defects in excess of industry standards (5% of total quantity) under the terms of the product warranty. **Once installed, boards will be considered to have been accepted by the homeowner; even the homeowner is not present during installation.** Supplier accepts no responsibility for problems arising from this incorrect handling.

I: PANEL MIXING



- Prepare at least four packs of flooring. Mix panels from different packs during installation.
- We recommend the alternate fitting of the panels from four different packs at the same time.
- Keep alternating the panels across the entire floor area. This guarantees the best possible appearance of your flooring product.

J: USE OF MASKING TAPES

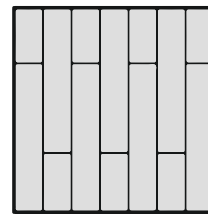
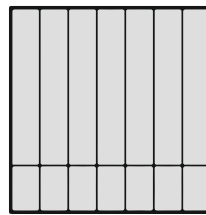
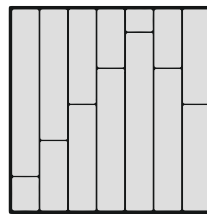
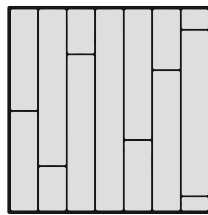


3M Scotch Blue Tape

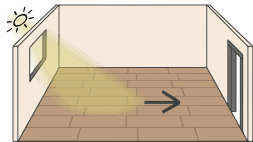
Only **3M scotch blue tape** is allowed for all types of installation methods.

K: STAGGER PATTERNS

- Stagger short end (butt joints) with a minimum of 15.75" (40cm) for the adjacent two rows.
- Avoid using boards less than 10" (25.4cm).
- Avoid 'H' style, stair-step style in any adjacent rows.



L: LAYING DIRECTION



- The recommended installation direction is lengthwise to the main light source.
- The joints are more visible crosswise than lengthwise to the light source.
- This is only a recommendation because there are also other influences.
- Avoid placing short end joints over seams of the subfloor.
- **The laying direction must be perpendicular to the subfloor joists.**

M: UNDERLAYMENT REQUIREMENT & LAYING

- **Underlayment requirement:**
 - The recommended underlay for this flooring material is **Good Neighbour** Underlayment, **which has already been attached to the plank.**
 - Additional layer of vapor barrier may be used when proceeding floating installations below ground level.
 - If the additional underlayment is used to provide additional sound transmission rating, 6 Cork underlayment with density equal/above 250kg/m³ is required. This will reduce excess up and down movement, which can cause damage to joints.

N: TRANSITION MOULDING

- Please find your flooring products and download the transition installation guidance from www.ecpremiumflooring.com.



170-6333 Graybar Rd
Richmond BC, Canada

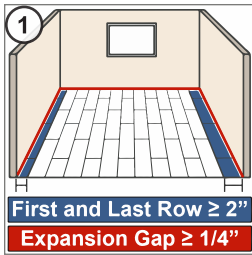


Tel: 604 276 0833
Fax: 604 276 0633
Toll Free: 1 888 540 0833



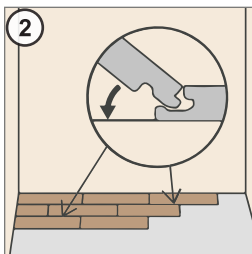
info@unifloor.ca
www.unifloor.ca

Part 2 Installation (Harmony & Grand Cru Series - Drop Lock Installation)

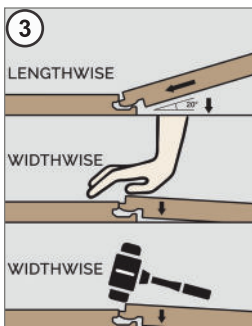


First panel row parallel towards the wall
Please ensure a minimum of $>2"$ ($>5\text{cm}$) width of the first and last row. The panels must follow the course of the wall; Dry-wall's unevenness exceeds $1/5"$ (5mm) must be marked on the first row of panels using a spacer. The panels have to be sawn lengthways following the marking. (This will maintain proper expansion space when the first row against uneven spots along the

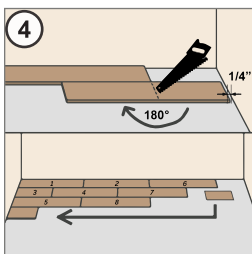
wall.) The last row of panels at the opposite wall should not be less than $2"$ (5cm) wide; if so, the width of the first row of panels should be cut down lengthways to avoid this. Please make sure that there is a min. distance to the wall of $1/4"$ (6mm). Bear this in mind when calculating the last row.



Starting the first row:
Remove the lengthwise tongue of the first-panel row and lay it against the wall. Connect the panels of the first row on the short butt ends. Insert the panel into the first panel's groove at an angle of 25° , and lower the panel to lock it into place. Ensure that the row is straight. Use thumb/mallet to ensure all joints are completely engaged. Please see also the installation video at www.unifloor.ca.



Starting the second & third row:
Insert the second row's first-panel section lengthwise in the groove profiling in the first row, lock it in place, and then bend the plank until the profile is laid down flat. The transverse joint must be offset by at least $40\text{ cm}/15\text{-}3/4"$ from row to row. Place a second panel lengthwise in the panel area's groove profiling and push it towards the first panel's short end butt joint at an angle of 25° . Use a rubber mallet or tapping block and hammer to lock the two panels by pushing it downward and press from above until you hear an audible click.

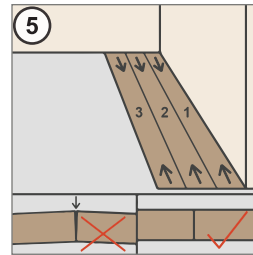


Finishing off the first row
For accurate cutting of the last panel in the row, rotate this through 180° degrees; and with the pattern side upwards, place beside the already installed row. Allow for distance from the wall at the end of the panel. Mark out offcut and saw off.

Installation with stair-stepping offset
Install the first three rows of the panel's sequence according to the numbers in the left drawing.

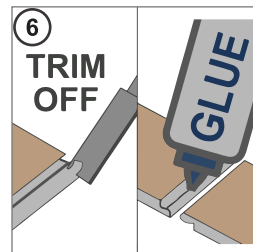
This will ensure that the first three rows of planks will be installed parallel; It also ensures a stable and consistently aligned beginning.

Install the leftover piece of the first row, not before the fourth-panel row. Always saw from the upper surface of the panel (to avoid splintering the edges). Only when using an electric jigsaw or a hand-held circular saw should the patterned side be placed facing downwards. Start each new row with the leftover piece from the preceding row.

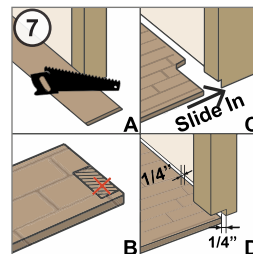


Aligning to the wall
Fix towards the walls by using spacers to achieve the exact parallel position to the wall with the longest run. Install the first 3 Panel rows before putting them in the final position. This guarantees you a tight connection between the elements. After exact positioning, parallel the rows with spacers towards the walls. This protects the rows against moving.

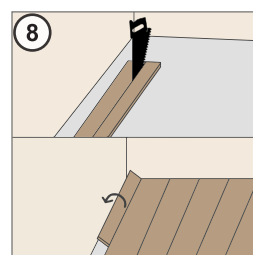
The transverse joints must be offset by at least $15.75"$ (40cm). Be sure to observe the minimum offset.



No possibility to angle the panels
Special cases:
If you are not able to angle the panels (e.g., under a door frame or low fitted radiator), you have to trim off the locking edge of the lip of the bottom groove by using a wood chisel or a small block plane. Run a bead of glue on the modified tongue and groove. Tap the panels tight together by using a hammer and push block or pull-bar. If necessary, secure it with an adhesive tape.

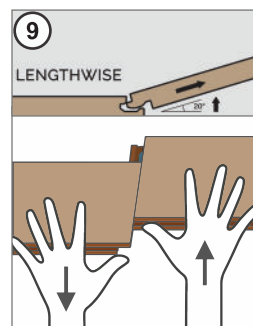


Installation towards door frames
Lay a panel next to the door frame (with the patterned side facing downwards) Cut into the door frame with the straight backsaw. Then slide the panel under the frame with the patterned side upwards. Don't forget to allow for freedom of movement here to $1/4"$ (6 mm).



The final panel row
Lay a panel precisely on the previous row. Lay a second panel (original width) on the top of it and draw an exact line for cutting. Cutaway excess vinyl. Join the panel lengthways. Minimum expansion gap $1/4"$ (6mm). To do this lay a panel on the previous panel row. Then lay a second panel on the panel to be measured with the tongue to the wall and

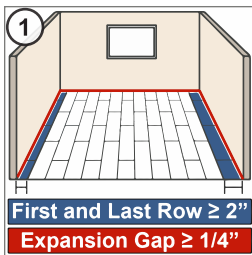
use it as a straight edge. Cutaway excess vinyl. Minimum expansion gap $1/4"$ (6mm). Insert the panel lengthways and lower down.



Disassembling the panels
Follow the steps below carefully to avoid damages to the products:

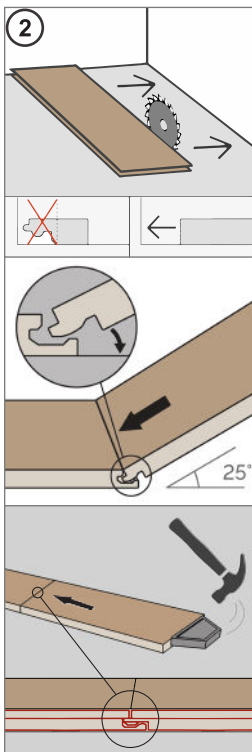
- Always disassemble the long side joint first by lifting the entire row at a 25° angle. (Carefully and gently)
- Leave the panels flat-laying on the ground.
- Sliding panels apart (see #10 drawing)
- In case panels cannot completely slide apart, lift panels at a slight angle while sliding.

Part 2 Installation (Stone Series - Angle Tap Installation)



First panel row parallel towards the wall
Please ensure a minimum of >2" (> 5cm) width of the first and last row. The panels must follow the course of the wall; Dry-wall's unevenness exceeds 1/5" (5mm) must be marked on the first row of panels using a spacer. The panels have to be sawn lengthways following the marking. (This will maintain proper expansion space when the first row against uneven spots along the wall.)

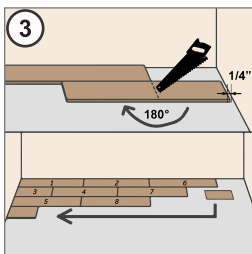
The last row of panels at the opposite wall should not be less than 2" (5cm) wide; if so, the width of the first row of panels should be cut down lengthways to avoid this. Please make sure that there is a min. distance to the wall of 1/4" (6mm). Bear this in mind when calculating the last row.



Installation start:
Remove the lengthwise tongue of the first-panel row and lay it against the wall.

Starting the first row:
Connect the panels of the first row on the short side. Insert the panel into the first-panel's groove at an angle of 25°, and lower the panel to lock it into place. Ensure that the row is straight. Please see also the installation video at www.unifloor.ca.

Starting the second & third row:
To start the second row, place the plank lengthwise and angle at approx. 25° before dropping the plank down. Install the next plank by lifting the long side at approx. 25° and dropping down, keeping in mind the short side should be 2-3mm away from the previous plank's end. Pay attention to the positioning of the short sides to ensure the profile pieces are perfectly aligned. Once the plank is lying flat, place the tapping block on the profile and use a hammer to gently tap so that the tongue and groove have a tight connection. Please note that the tapping block should be positioned properly on the tongue so that damage will not occur during a taping on the short end tongue/groove.

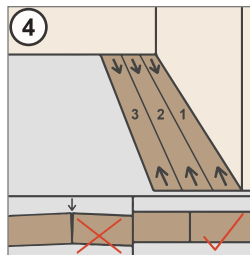


Finishing off the first row
For accurate cutting of the last panel in the row, rotate this through 180 degrees; and with the pattern side upwards, place beside the already installed row. Allow for distance from the wall at the end of the panel. Mark out offset and saw off.

Installation with stair-stepping offset
Install the first three rows of the panel's sequence according to the numbers in the left drawing.

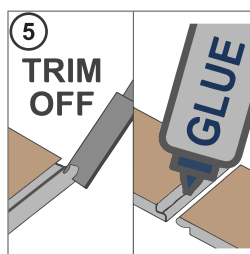
This will ensure that the first three rows of planks will be installed parallel; It also ensures a stable and consistently aligned beginning.

Install the leftover piece of the first row, not before the fourth-panel row. Always saw from the upper surface of the panel (to avoid splintering the edges). Only when using an electric jigsaw or a hand-held circular saw should the patterned side be placed facing downwards. Start each new row with the leftover piece from the preceding row.

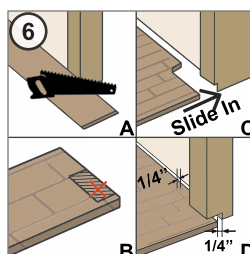


Aligning to the wall
Fix towards the walls by using spacers to achieve the exact parallel position to the wall with the longest run. Install the first 3 Panel rows before putting them in the final position. This guarantees you a tight connection between the elements. After exact positioning, parallel the rows with spacers towards the walls. This protects the rows against moving.

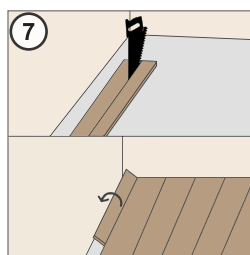
The transverse joints must be offset by at least 15.75" (40cm). Be sure to observe the minimum offset.



No possibility to angle the panels
Special cases:
If you are not able to angle the panels (e.g., under a door frame or low fitted radiator), you have to trim off the locking edge of the lip of the bottom groove by using a wood chisel or a small block plane. Run a bead of glue on the modified tongue and groove. Tap the panels tight together by using a hammer and push block or pull-bar. If necessary, secure it with an adhesive tape.

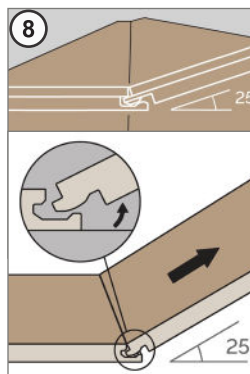


Installation towards door frames
Lay a panel next to the door frame (with the patterned side facing downwards) Cut into the door frame with the straight backsaw. Then slide the panel under the frame with the patterned side upwards. Don't forget to allow for freedom of movement here to 1/4" (6 mm).



The final panel row
Lay a panel precisely on the previous row. Lay a second panel (original width) on the top of it and draw an exact line for cutting. Cutaway excess vinyl. Join the panel lengthways. Minimum expansion gap 1/4" (6mm). To do this lay a panel on the previous panel row. Then lay a second panel on the panel to be measured with the tongue to the wall and

use it as a straight edge. Cutaway excess vinyl. Minimum expansion gap 1/4" (6mm). Insert the panel lengthways and lower down.



Disassembling the panels
Lift the whole row of panels lengthwise, at an angle of a 25-degrees, and disengage the lock from the lengthwise edge. Disassembling the panels on the short side (widthwise) by lifting panels at an angle of 25-degrees while disengaging the short butt end joint.

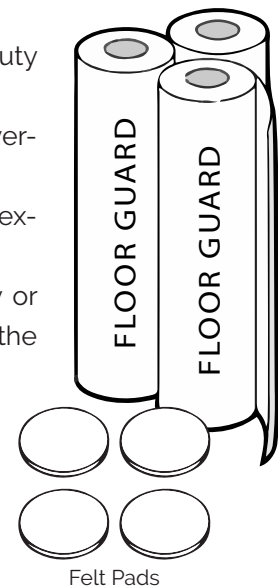
Part 3 Care and Maintenance

A: CLEANING

- Under no circumstances should the floor be soaked with liquid. SPC flooring is waterproof itself; excessive moisture will grow microorganisms, which will cause damage to the flooring's structure.
- Sweep the floor regularly to keep it free of dust, grit, and other abrasive materials.
- Sweep the floor with a damp cloth towel along with the recommended cleaner. (e.g., Bona vinyl cleaner) Apply cleaner to the towel, not directly on the floor.
- Hardened glue-residue can be removed with acetone or a special glue solvent, or usual household cleaners may be used, please avoid scouring agents, wax or polish.
- For regular cleaning and preservation, we recommend Bona Vinyl Flooring Cleaner. Larger soiling and persistent stains like color, glue, nail varnish, or oil can easily be removed using acetone or any other alcohol-containing solvents. (Must be approved to be used for vinyl flooring according to NWFA guidelines.)
- If a vacuum is used, make sure a soft texture nozzle is attached to avoid scratching marks being left on the surface.

B: PROTECTION

- Use a heavy-duty floor protection membrane (e.g., Floor Guard heavy-duty floor protection) to cover all areas.
- Avoid taping protection membrane directly to the surface of the floor by overlapping each run of the membrane while taping different run together.
- Tape the end run of the membrane along baseboard or shoe base with extreme low adhesive tape.
- An extra layer of plywood, MDF board, might be used along the hallway or high traffic areas where furniture and appliances will be transferred into the premises.
- Putting felt pads on all furniture's legs are highly recommended.
- Keep in mind, the use of area rugs will create an uneven color variation due to the uneven exposure to sunlight.
- Rollable furniture should have soft rubber rollers (type W) in accordance with DIN 12529.
- Use a protective mat to protect areas around office chairs.



C: MAINTENANCE

- At all times, a temperature ranges of 5°C(41°F) to 60°C(140°F), and a humidity range of 30% to 50% must be maintained.
- Do not drag heavy objects or furniture across the floor. When moving appliances or furniture, lay a protective item such as cardboard and walk the heavy item across carefully.
- Place dirt absorbing mats at exterior doors to reduce dirt and sand comes on the floor.



Part 4 Product Warranty

A: LIFETIME LIMITED STRUCTURAL WARRANTY

- This warranty covers the structure of the plank should be free of manufacturer defects after a proper installation is performed.
- Notes: Warranty describe above is limited to structural defects that occur after completion of installation. Prior to installation contractor is responsible for inspecting and reporting for any product defects prior to installation. Any pieces that are installed are deemed to be accepted by the installer and homeowner.

B: LIFETIME LIMITED RESIDENTIAL WEAR WARRANTY

- EC Premium - AquaFix warrants the decor layer underneath the top wear layer will not wear through under normal residential traffic and usage for lifetime from the purchasing date.

C: LIMITED LIGHT COMMERCIAL WEAR WARRANTY

Harmony Series & Stone Series	Grand Cru Series
10 YEARS	15 YEARS

- EC Premium - AquaFix warrants the decor layer underneath the top wear layer will not wear through in the light commercial application. (e.g. salon, clinic, or boutique)
- Any high traffic commercial such as food court, supermarket, industrial zone, or entrance, the hallway of a business office is not considered as a light commercial wear warranty.

D: FILING A CLAIM

- Copy of original purchase receipt must be submitted to the original dealer.
- Coordinate with inspection appointments set by dealer and distribution.
- A minimum of three full planks must be kept for testing purposes.
- EC Premium - AquaFix only accepts claims of defect products, with over 10% of the total quantity of products during the warranty covered period. Customers can claim for the same quantity as defect quantity with the same or similar products. But, in case a specific product has been discontinued, a similar product or portion of the original purchase value, which is equivalent to the defect quantity, can be refunded to the original purchaser.

E: WARRANTY EXCLUSIONS

- All installation must be performed in accordance with the EC Premium - AquaFix installation manual.
- Proper care and maintenance must be performed following EC Premium - AquaFix maintenance instruction.



- The surface sheen reduction is a natural aging of products and is not considered to be the defect of surface wear.
- Color changes due to exposure to direct strong light is not covered. Avoid using area rugs to eliminate uneven exposure to sunlight.
- Any damage caused by chemical spills, water leakage, surface scratches, cutting, fire, high heel shoes marks, excess dryness, moisture, or abuse of any kind is not covered by warranty.
- Labour cost is not covered by this warranty.
- EC Premium - AquaFix is not responsible for the expansion and contraction of panels due to any improper temperature or moisture conditions.
- EC Premium - AquaFix accepts no responsibility for any problems arising from pets, insects, or microorganisms.
- All surface wearing on transition or stair nosings are not covered by this warranty.
- Installation of products that are not compliant with radiant heat will void the warranty.
- The warranty of the products is not transferable and is limited to the original purchaser only.
- In accordance with flooring industry standard, 5% of industrial defect out of the total quantity of products is allowed and, as a result, 10% of wastage during any installation should be calculated before installation is performed.
- Any defect piece is found before installation should not be installed; once products are installed will be deemed to have been accepted by the customer. It is the responsibility of the installer and the homeowner to inspect products' defects before installation. EC Premium - AquaFix accepts no liability for any labour cost for all claims.
- The British Columbia province law governs this Limited Warranty set above. EC Premium - AquaFix assumes no liability for incidental or consequential damages arising from the product's use or non-use.
- Products sold as is; auction goods, discontinued/off the rack, or indirect trades in any kind by unauthorized dealer/individual.
- Failure of providing the original purchasing invoice from Unifloor Trading Inc.
- Under no circumstances will the value of a warranty claim exceed the original purchase price of the product.

There are no other extended warranties except statements set above.





www.ecpremiumflooring.com